

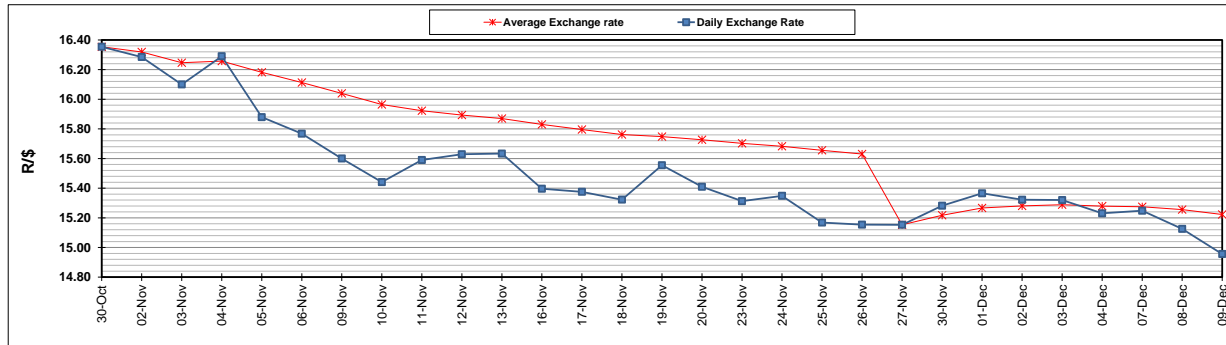
	PETROL 95 ULP	PETROL 93 ULP & LRP	DIESEL 0.05%	DIESEL 0.005%	ILL. PAR.
GAUTENG PUMP PRICE (SA c/l) AS FROM 02/12/2020	1,446.000	1,426.000	-	-	-
WHOLESALE PRICE (SA c/l) AS FROM 02/12/2020	-	-	1,245.420	1,247.820	684.688
SINGLE NATIONAL MAXIMUM RETAIL PRICE	-	-	-	-	856.000
BASIC FUEL PRICE - 09/12/2020 (SA c/l)	510.011	505.110	532.988	534.660	514.717
PRESS RELEASE CONTRIBUTION TO BFP 02/12/2020 - 09/12/2020 (SA c/l)	479.170	469.170	486.630	489.030	472.128
UNIT OVER/(UNDER) RECOVERY - 09/12/2020 (SA c/l)	(30.841)	(35.940)	(46.358)	(45.630)	(42.589)
AVERAGE BASIC FUEL PRICE 27/11/2020 - 09/12/2020	511.140	504.548	532.508	533.878	516.421
AVERAGE UNIT OVER/(UNDER) RECOVERY 27/11/2020 - 09/12/2020	(22.870)	(26.278)	(49.878)	(48.848)	(51.293)

ANALYSIS MOVEMENT OF AVERAGE OVER/(UNDER) RECOVERY

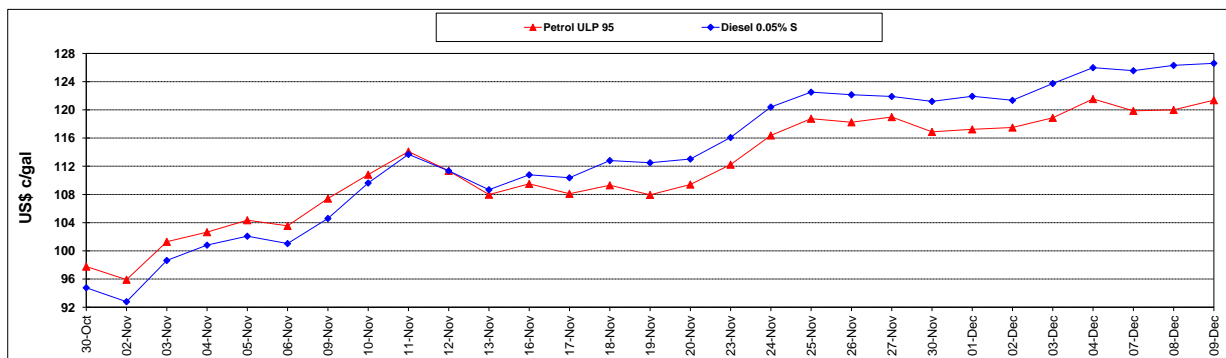
	PETROL 95	PETROL 93	DIESEL 0.05%	DIESEL 0.005%	ILL. PAR.
- MOVEMENT IN INTERNATIONAL PRODUCT PRICES	(36.573)	(39.805)	(64.154)	(63.161)	(65.138)
- MOVEMENT IN EXCHANGE RATE	13.703	13.527	14.276	14.313	13.845
AVERAGE UNIT OVER/(UNDER) RECOVERY 27/11/2020 - 09/12/2020	(22.870)	(26.278)	(49.878)	(48.848)	(51.293)

R/\$ EXCHANGE RATE - (R/\$14.9555 - 09/12/2020)

EXCHANGE RATE USED IN BASIC FUEL PRICE



INTERNATIONAL PRODUCT PRICES OF BASKET USED IN BASIC FUEL PRICE



BASIC FUEL PRICE IN SA CENTS PER LITRE

